

NUOS PRIMO FLOOR STANDING



- / Green, boost, auto, antilegionella functions and time setting of the withdrawals
- / Coil and probe-holder for solar and/or boiler integration
- / Additional heating element
- / COP 3,1 with air temperature at 20°C (EN 255-3)
- / COP 2,8 with air temperature at 7°C (EN 255-3)
- / Ecologic gas R134A allows to reach water temperatures up to 62°C in heat pump mode
- / Working range in heat pump mode with air temperatures from -5 to 42°C.
- / Active anode (protech) + magnesium anode
- / Titanium enamelled steel tank
- / Condenser wrapped around the tank
- / Led module display

ENERGY CLASS



**Easiness of use,
-5°C inlet air min.
temperature.
Renewable product**

TECHNICAL DATA

| | | NUOS 200 | NUOS 240 | NUOS 240 SYS |
|--|-------|--------------|----------|--------------|
| COP 7°C (EN 16147) | | 2,41 | 2,64 | 2,64 |
| COP 7°C (EN 255-3) | | 2,8 | 2,8 | 2,8 |
| COP 20°C (EN 255-3) | | 3,1 | 3,1 | 3,1 |
| Heating time with air at 7°C (EN 16147) | h:min | 7:45 | 9:33 | 09:33 |
| Min/max air temperature | °C | -5/42 | -5/42 | -5/42 |
| Sound power | db(A) | 53 | 53 | 53 |
| Average absorbed power | W | 500 | 500 | 500 |
| V40 - Max. quantity of hot water at 40°C (*) | l | 284 | 348 | 348 |
| Storage tank capacity | l | 200 | 242 | 238 |
| Max. operating pressure | bar | 6 | 6 | 6 |
| Voltage/ max. power consumption | V/W | 220-230/2750 | 220/2670 | 220/2670 |
| Heating element power | W | 2000 | 2000 | 2000 |
| Standard air flow rate | m³/h | 400 | 400 | 400 |
| Minimum volume of installation room (**) | m³ | 20 | 20 | 20 |
| Weight when empty | kg | 87 | 92 | 107 |
| Protection rating | | IP24 | IP24 | IP24 |
| Insulation thickness | mm | 35 | 35 | 35 |
| Diameter of hydraulic connections | " | 3/4 M | 3/4 M | 3/4 M |
| Min. temperature of storage tank room | °C | 1 | 1 | 1 |
| Coil surface | m² | - | - | 0,65 |
| Heat losses(*) | W | 36 | 44 | 44 |
| Static pressure available | Pa | 53 | 53 | 53 |

(*) Water temperature 10-55°C with air at 7°C (EN 16147)

(**) Minimum room volume in case of installation without canalization

CODE



| | 3079008 | 3079009 | 3079010 |
|-----------------|---------|---------|---------|
| Erp class | A | A | A |
| Tapping profile | L | XL | XL |



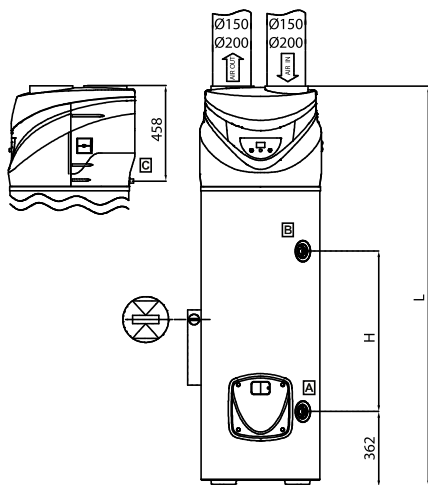
ANTI-CORROSION



SOLAR
INTEGRATION

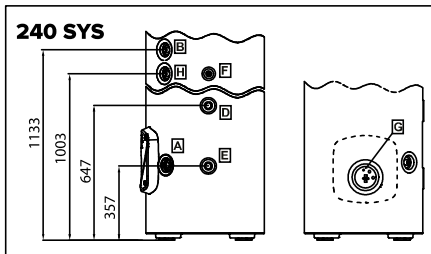
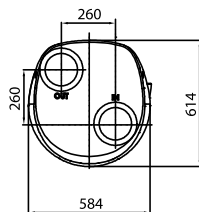


ANTI-FREEZING

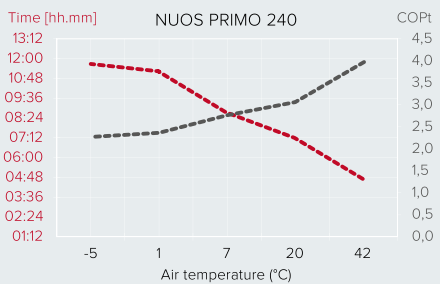
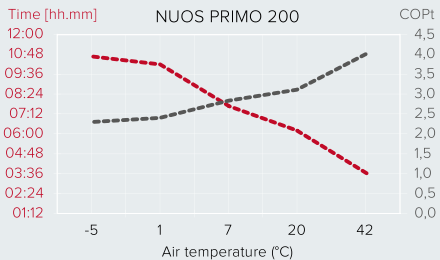


Dimensions

| | 200 | 240 (SYS) |
|------|------|-----------|
| H mm | 551 | 771 |
| G mm | 1706 | 1926 |



- A** Pipe \varnothing 3/4" cold water inlet
- B** Pipe \varnothing 3/4" hot water outlet
- C** Condensate discharge connection \varnothing 1/2" F
- D** Pipe \varnothing 3/4" solar circuit inlet (240 SYS)
- E** Pipe \varnothing 3/4" solar circuit out



COMPRESSOR

EXPANSION
VALVE

CONDENSER

EVAPORATOR

