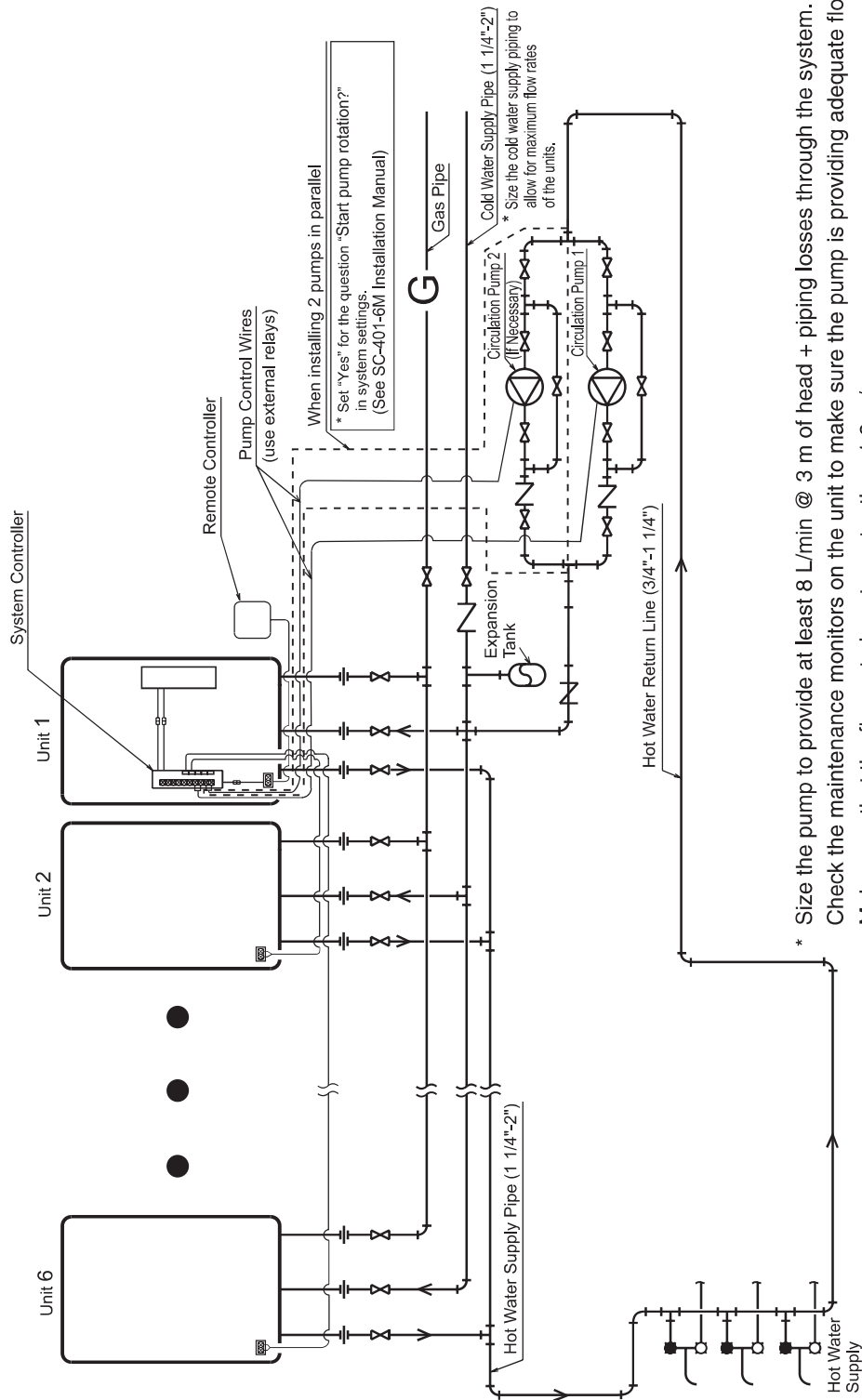


B-1. Example of Recirculation with a Multi-System (Recirculation system) Only WHXCE56 series.

This system will make hot water more quickly available to remote fixtures.

The pump will circulate water through the loop until the entire loop is warm, and then the system controller will turn off the pump until the loop cools down.



* Size the pump to provide at least 8 L/min @ 3 m of head + piping losses through the system. Check the maintenance monitors on the unit to make sure the pump is providing adequate flow.

• Make sure that the flow rate is not greater than 1.2 m/sec.

(3/4": 20 L/min, 1 1/4": 50 L/min)

If the flow is too low, the recirculation loop temperature will not be warm enough, if the flow is too high, the lifetime of the unit will be reduced.

* If there are multiple circulation loops, try to make the flow rate .3-5 L/min in each loop.

* Use copper or stainless water piping for the entire system.